

# RDM – Danish Red



Lisbet Holm

## • RDM-status 2009



### • **Production**

Kg milk	8,652
% Fat	4.26
% Protein	3.47



© Ely Geverink  
R Festival daughter

### • **Breed statistics**

Herds size	90
Number of cows	40.500
Number of 1st ins.	70.000

## • RDM best herds and cows



- Highest yielding herds
  - Erik Jepsen, Stadil 11,035 kg milk, 860 kg fat + protein
  - Ejnar Brouer, Glesborg 10,812 kg milk, 860 kg fat + protein
- Highest yielding cows
  - R Admiral daughter 14,461 kg milk, 1,524 kg fat + protein
  - SYD Frem daughter 17,164 kg milk, 1,338 kg fat + protein



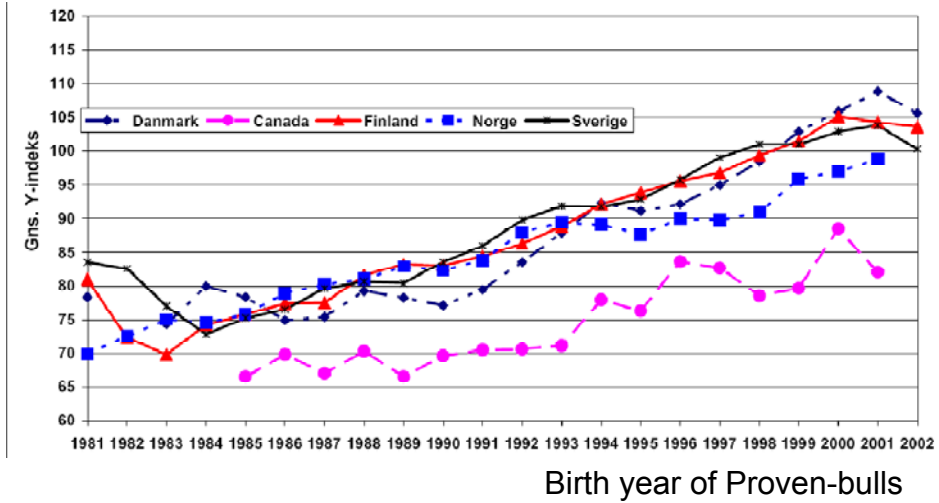
## • Index for Total Merit - NTM



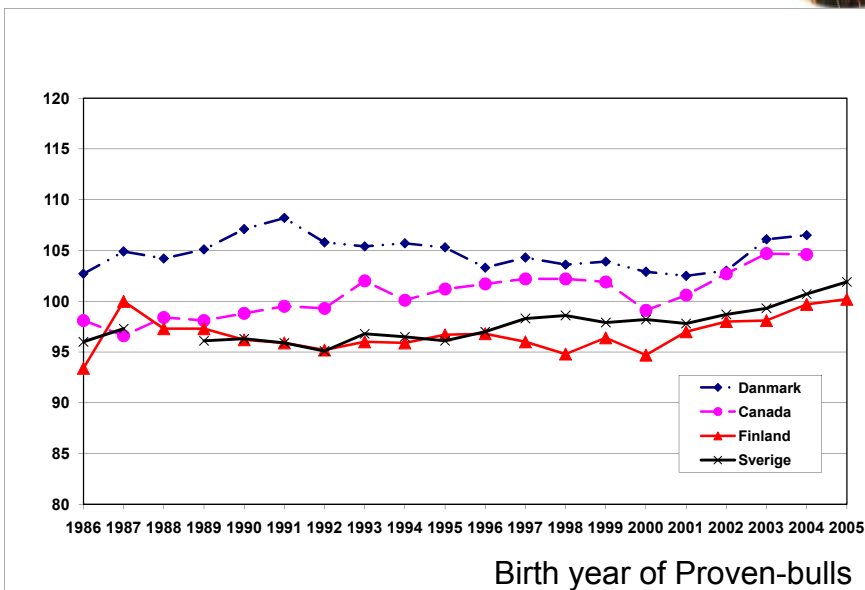
<b>Production - Yield</b>	Milk, fat and protein yield (-1,1,4)
<b>Female fertility</b>	No. of Inseminations, calving to first ins., fertility treatments
<b>Calving Ability</b>	The percentage of stillborn calves and ease of calving
<b>Udder health</b>	Occurrence of mastitis, CSS, udder conformation
<b>Other health traits</b>	Incidences of metabolism, feet & legs and reproduction diseases
<b>Longevity</b>	Productive lifetime corrected of yield level
<b>Conformation traits</b>	Body, feet & legs and mammary system
<b>Milking speed/temperament</b> – farmers info about Milking speed and temperament	

→ *Progress for production without decrease in health traits*

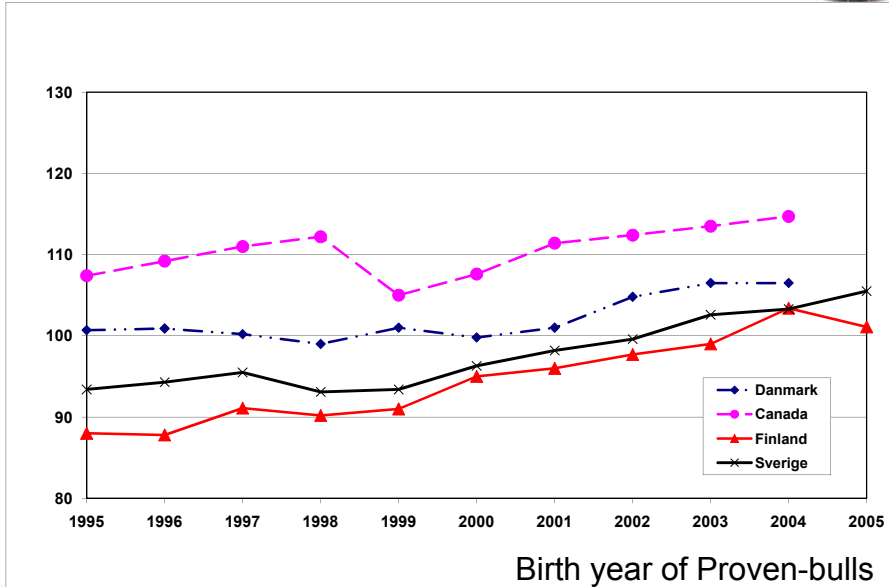
# Genetic level Production



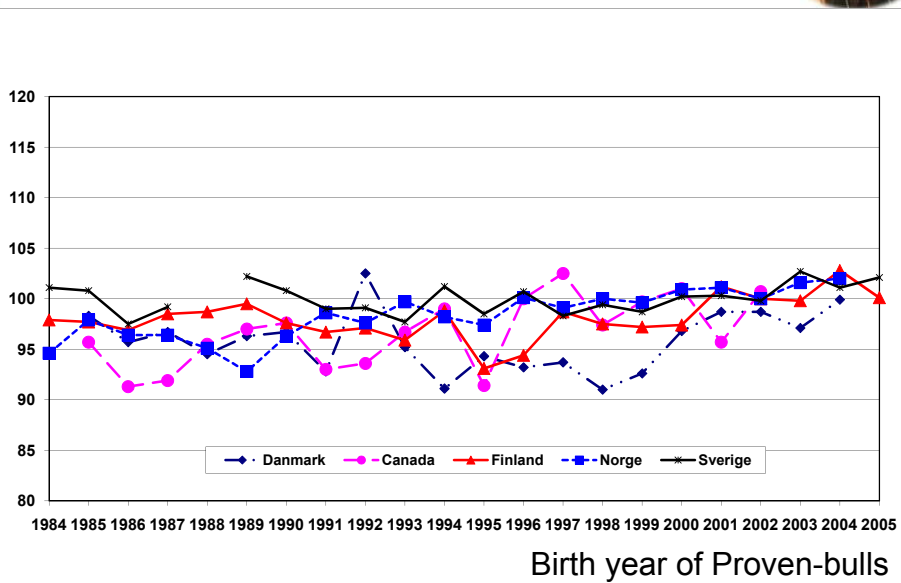
# Genetic level Feet and legs



## Genetic level Mammary



## Genetic Level Udder health



## • How to select young bulls



- 240 (1200) bull calves genomic tested per year
  - App 40 (225) used as young sires
  - The best used as GenVIKPLUS
- Bull dams
  - Use of genomic selection before flushing
  - Inbreeding – EVA
  - Good bulls in pedigree
- Sires of sons
  - The best regarding total merit
  - Only use of sires from the Scandinavian countries

## • Excellent sires!



- R Fastrup
  - R Facet
  - R Gazelle
- } New and hot bulls
- R David
  - R Bangkok
  - R Ascona
- } High reliability bulls



Thank you for your attention.....

